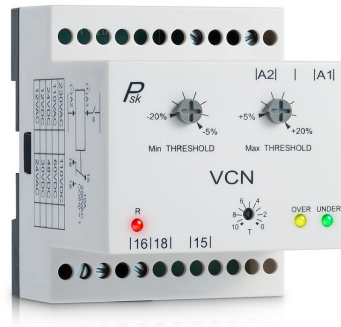


# VCN

## Voltage control relay one phase AC or DC

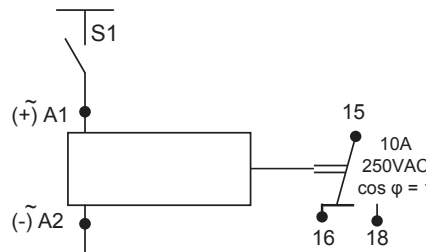
- Measures its own supply voltage.
- Monitors AC or DC voltage.
- Minimum and maximum thresholds can be adjusted separately.
- Fixed hysteresis.
- 3 LED's indicates Over voltage, Under voltage and relay status.
- Timing on the event of over / under voltage,
- can be adjusted between 0.1 to 10 seconds.
- Not effected by harmonic distortion.
- 1 changeover relay output.



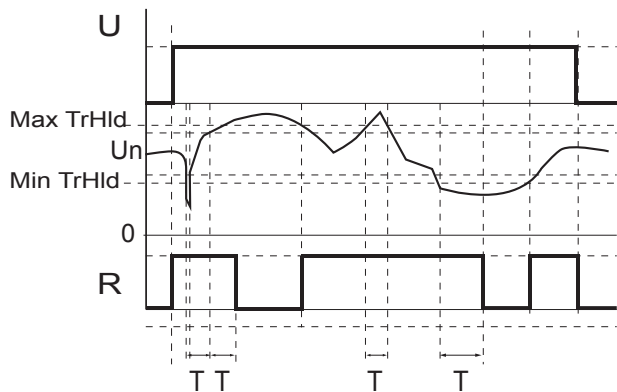
### Dimensions & weight

- Width: 62 mm
- Height: 65 mm
- Depth (excl. DIN-profile): 75 mm
- Weight: 141 gram

### Connections



### Function



### Ordering information

VCN - AC - V	<input type="checkbox"/>	230VAC	110VDC
	<input type="checkbox"/>	110VAC	60VDC
VCN - DC - V	<input type="checkbox"/>	24VDC	48VDC
	<input type="checkbox"/>	12VDC	30VDC
	<input type="checkbox"/>	12VAC	24VAC
	<input type="checkbox"/>		

### Operating

Output relay energizes if the supply voltage is within the max and min threshold sets. The relay de-energize if the voltage goes outside these thresholds for longer than time (T) set on the front panel or when supply breaks. The 3% hysteresis ensures clean relay switching at each threshold. Timing (T) on overrun of the low and high threshold provides protection against power-line disturbance.

Red LED displays relay status  
 Yellow Led displays OVER VOLTAGE.  
 Green LED displays UNDER VOLTAGE.

### General specifications

- Frequency: 50 / 60Hz
- Power consumption: 1.8VA
- Duty cycle: 100%
- Protection class open air: IP20
- Protection class enclosed: IP40
- Self-extinguishing plastic housing UL V0 acc IEC 529
- Mounting position: on DIN-rail TS 35 according to EN 50022
- Terminal : acc IEC 60947-7-1, IEC 60998-1
- Terminal Capacity: 1x4mm<sup>2</sup> without multicore cable end  
 1x0.5 to 2.5mm<sup>2</sup> with/without multicore cable end

### Output circuit

- Relay: 1 C/O
- Rated voltage: 250 Vac
- Switching capacity ac: (8A / 250V) COS φ = 1
- Switching capacity dc: 3 A 30 Vdc
- Max switching capacity ac: 8 A
- Mechanical life: 1 x 10<sup>6</sup> operations
- Electrical life at 1000 VA COS φ=1: 200.000 operations

### Environmental conditions

- Permissible ambient temperature: -20°C....+50°C
- Storage temperature: -25°C....+70°C
- Transport temperature: -25°C....+70°C
- Relative humidity (acc. IEC 721-3-3 CLASS 3K3): 15% to 85%
- Vibration resistance (acc. IEC 68-2-6): 10 TO 55 H

### Dimensions

