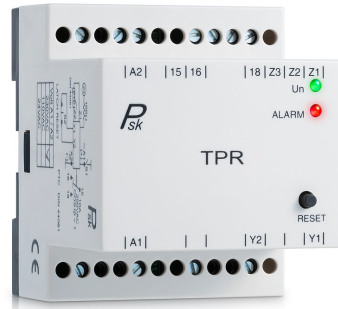


TPR

Thermistor motor protection relay

- Monitors thrmistor assembled in the motor winding stator
- Detects termistor failurely or over heat
- Not effected by harmonic distortion
- Latching unables upon termistor fault
- LED indicates for relay status

TPR monitors motor thermistors assembled in the winding stator, in order to protect motors/alternators/transformers etc. from getting burned. The relay de-energizes and alarm red light is on when the TPR detects either: short circuit (thermistor resistance below 10 ohm) or over heating (resistance increased above 3100 ohm) .Relay energizes when the thermistor resistance drops below 1650 ohm. Latching is enabling when terminals (Y1) and (Y2) are shortened. External switch (S2) must be added to allow latch reset.



General specification

- Supply: Refer to ordering information
- Supply tolerance: 0.85 to 1.1 Un 50/60Hz
- Power consumption 1.0 VA
- Duty cycle: 100%
- Protection class open air: IP20
- Protection class enclosed: IP20
- Self-extinguishing plastic housing UL V0 acc IEC 529
- Mounting position: on DIN-rail TS 35 according to EN 50022
- Terminals: acc IEC 60947-7-1, IEC 60998-1
- Terminal Capacity: 1x4mm² without multicore cable end.
- 1x0.5 to 2.5mm² with/without multicore cable end.

Dimensions & weight

- Width: 62 mm
- Height: 65 mm
- Depth (excl. DIN-profile): 72 mm
- Weight: 192 gram

Display

- Red LED On – displays thermistors failure
- Green LED On – Supply voltage

Output circuit

Relay: 1 C/O
 Rated voltage: 250VAC
 Switching capacity ac: 2000 VA (8A / 250VAC) COS $\phi = 1$
 Switching capacity dc: 6A 30Vdc
 Max switching capacity ac: 10A
 Mechanical life: 1x10⁶ operations
 Electrical life at 1000 VA COS $\phi = 1$: 200,000 operations

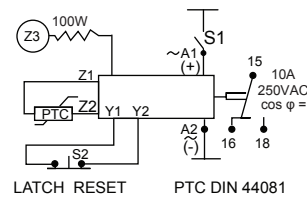
Environmental conditions

- Permissible ambient temperature: -20°C.....+50°C
- Storage temperature: -25°C.....+70°C
- Transport temperature: -25°C.....+70°C
- Relative humidity (acc. IEC 721-3-3 CLASS 3K3): 15% to 85%
- Vibration resistance (acc. IEC 68-2-6): 10 to 55H

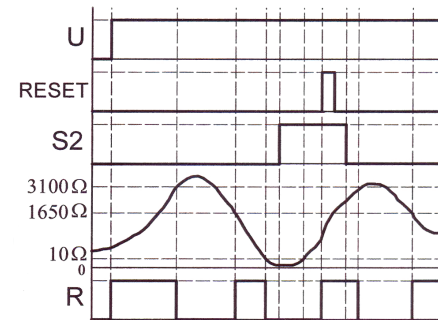
Ordering information

TPR	Volt A1/A2
	120VAC
	110VAC
	24VAC

Connections



Timing



Dimensions

